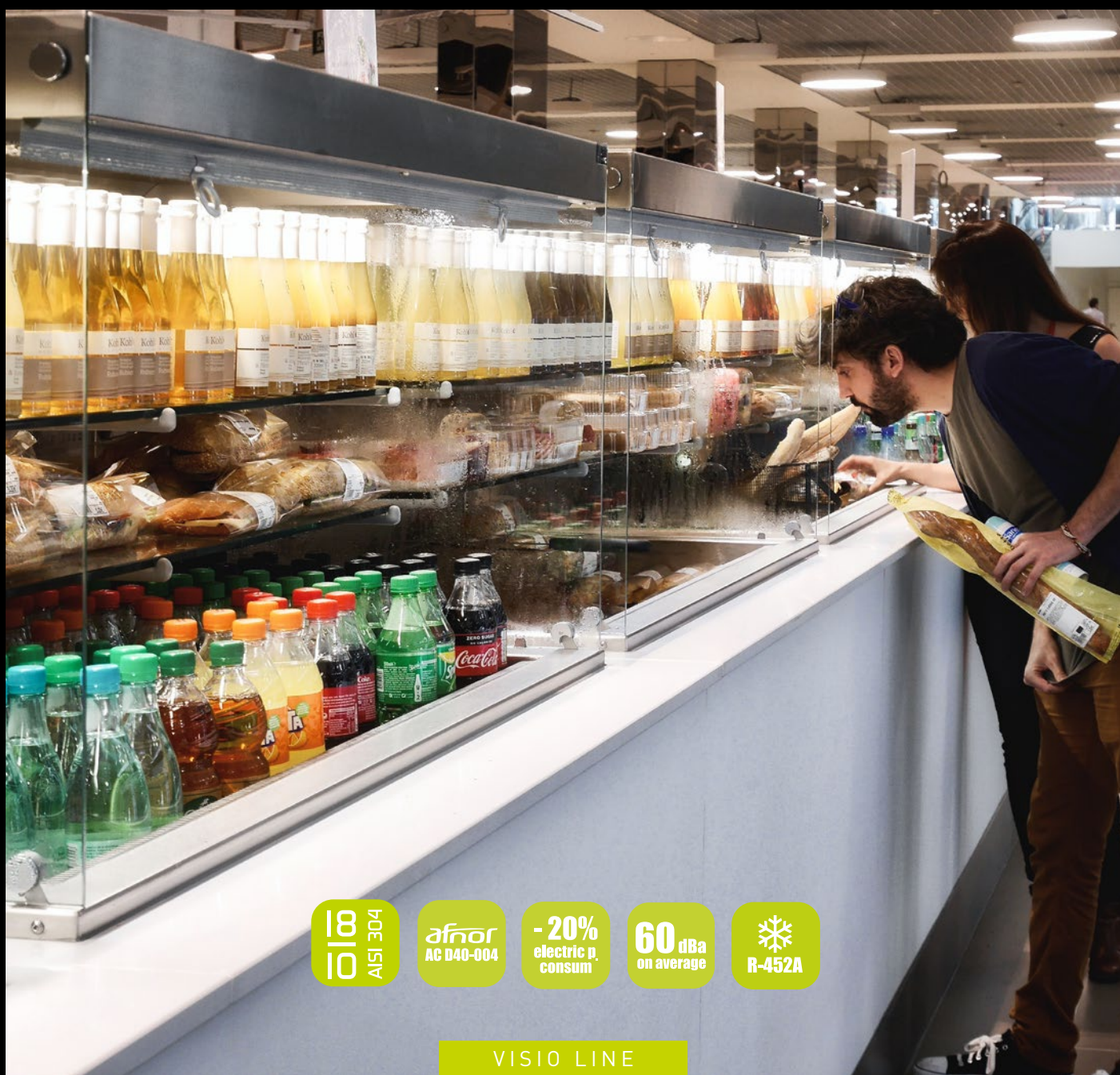




VAUCONSANT

LA DISTRIBUTION QUI
DONNE DE L'APPÉTIT

REFRIGERATED BLOW-AIR WELL TO DROP IN WITH REFRIGERATED PULS'AIR SYSTEM SELF-SERVICE OR DELI DISPLAY - 3 SHELVES



18
1018
AISI 304

afnor
AC D40-004

- 20%
electric p.
consum

60 dBa
on average

❄️
R-452A

VISIO LINE

Long term service
24h

MATFER BOURGEAT
A PASSION FOR TASTE

MORE PERFORMANCE

LONG TERM SERVICE 24H

MORE SAFETY

OPTIONAL UVC LAMP TO CURTAIL THE RISK OF DEVELOPMENT AND PROLIFERATION OF ANY GERMS OR BACTERIA

**MORE ENVIRONMENTALLY FRIENDLY
CONDENSING UNIT WITH R452-A**

The Visio Line refrigerated well to drop-in with a high capacity refrigerated Puls'Air System self-service display is designed to hold up to 147 plates and up to 228 small dishes.

It is proven, the Vauconsant refrigerated displays are definitely more efficient than the ones from a lot of other companies. Even when opened on customer's side, they guarantee a product core temperature that strictly satisfies AFNOR AC D40-004 standards for food distribution in collective catering.

The new generation of Eco-Power condensing units is more efficient while being more economical and enable energy savings up to 20%. They do not exceed 60 dBa on average. Vibrations and heat emission have also been considerably reduced.

Vauconsant uses only AISI 304 stainless steel in the manufacture of its products to ensure a perfect hygiene. With the UVC lamp in option, the development and proliferation of any germs or bacteria circulating throughout the system is curtailed.

CAPACITY OF THE WELL

- From 2 to 5 GN 1/1-100 mm containers (not supplied)
- From 16 to 42 plates Ø 150 mm
- From 30 to 72 ramekins 130 x 90 mm
- From 86 to 221 bottles or cans Ø 65 mm

CAPACITY OF THE DISPLAY

- From 61 to 147 plates Ø 150 mm
- From 102 to 228 ramekins 130 x 90 mm
- From 293 to 698 bottles or cans Ø 65 mm

STANDARD EQUIPMENT

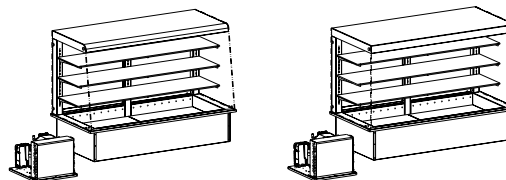
- 3 shelves adjustable in height
- Watertight LED ceiling lighting (4000°K - 210 lm), or LED lighting in the upper part and under each shelf (4000°K - 210 lm)
- Condensing unit (R452a refrigerant gas)
- Ventilation grid, to place on the front (customer's side)
- Control panel to drop in

CONSTRUCTION

- Stainless steel
- Stainless steel top in scratch-resistant finish
- 105 mm deep well
- Refrigerated by an adjustable ventilated evaporator. Electrical defrost by heating elements.
- Display with curved or rectilinear design, open on customer's side
- 3 shelves in 10 mm thick tempered glass
- 1 or 2 hinged doors at the operator's side
- Removable well bottom and air supply or output duct
- Circulation of the ventilated air in the doors and the upper part of the display to guarantee the refrigeration performance
- Temperature regulation by touchscreen thermostat with delayed start function
- Insulated by 40mm thick CFC-free polyurethane foam
- Full internal fuse protection
- Refrigerant gas, electrical wiring and drainage on the right hand side viewed from the operator's side

OPTIONS

- Wells for 200 mm deep containers
- Wells for 150 mm deep containers
- Gastronorm well
- Antibacterial UVC lamp
- Deli display
- Textile curtain on the customer's side (only available for displays with rectilinear design)
- Inclined tempered glass shelf
- Extra shelf
- Perforated s/s element for flush presentation
- Evaporation drip tray
- Tray for condensing water
- Back in mirror polished finish instead of hinged doors (wall-mounted display)
- Flaps on customer's side (only available for displays with curved design)
- Delivered without condensing unit (remote condensing unit)
- Tropicalized condensing unit

**REFRIGERATED "BLOWN AIR" WELLS TO DROP IN
WITH REFRIGERATED PULS' AIR SYSTEM SELF SERVICE DISPLAY - 3-LEVELS
DELIVERED WITH CONDENSING UNIT**


Capacity		2 GN 1/1	3 GN 1/1	4 GN 1/1	5 GN 1/1
Length		820 mm	1150 mm	1475 mm	1800 mm
Width		700 mm	700 mm	700 mm	700 mm
Well depth		290 mm	290 mm	290 mm	290 mm
Display height		750 mm	750 mm	750 mm	750 mm
Number of hinged doors		1 door	2 doors	2 doors	2 doors
Cooling P.		1185 W	1440 W	1727 W	2126 W
Electric P.		1000 W	1450 W	1800 W	2350 W
Weight		145 kg	184 kg	221 kg	257 kg
Capacity of well : plates/ramekins/bottles*		16/30/86	24/42/131	32/60/176	42/72/221
Capacity of display : plates/ramekins/bottles*		61/102/293	87/138/428	113/192/563	147/228/698
LED lighting under the ceiling	Curved	MEVL00021	MEVL00031	MEVL00041	MEVL00051
	Cubic	MEVL00121	MEVL00131	MEVL00141	MEVL00151
LED lighting under the shelves and the ceiling	Curved	MEVL02020	MEVL02030	MEVL02040	MEVL02050
	Cubic	MEVL02120	MEVL02130	MEVL02140	MEVL02150

Options

Without condensing unit (remote unit)	Code	OFG06	OFG08	OFG11	OFG13
Gastronorm well	Code	OAC042	OAC042	OAC042	OAC042
Deli display (closed on the customer side by a fixed piece of glass) (1)	Code	OAS062	OAS063	OAS064	OAS065

OPTIONS

Designation		2 GN 1/1	3 GN 1/1	4 GN 1/1	5 GN 1/1
Well for 200mm deep containers (1)	Code	OAC030	OAC030	OAC030	OAC030
Well for 150 mm deep containers (1)	Code	OAC031	OAC031	OAC031	OAC031
Raiser for flush presentation (per GN 1/1) - unit	Code	OAC020	OAC020	OAC020	OAC020
UVC germicidal lamp, for display	Code	OEH032	OEH033	OEH034	OEH035
Evaporation tray (contents 2.75 L), 1200 W	Code	OFD030	OFD030	OFD030	OFD030
GN 1/1-65 tray for condensing water	Code	OFD010	OFD010	OFD010	OFD010
Mirror polished back instead of the sliding doors	Code	OAS080	OAS080	OAS080	OAS080
Textile curtain	Code	OAS072	OAS073	OAS074	OAS075
Tilted glass shelf - unit (2)	Code	OAS022	OAS023	OAS024	OAS025
Additional shelf with stainless steel consoles - unit (2)	Code	OAS032	OAS033	OAS034	OAS035
Flaps on customer's side	Code	OAS152	OAS153	OAS154	OAS155
With tropicalized unit (3)	Code	OFG22	OFG22	OFG22	OFG22

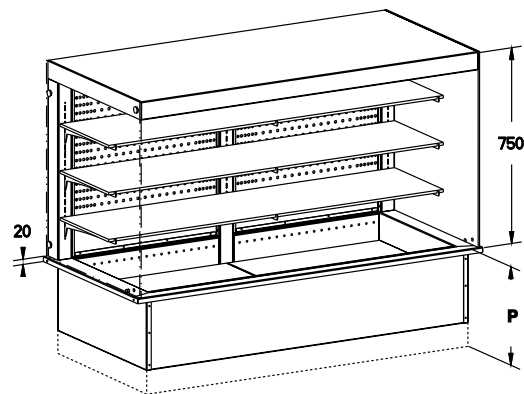
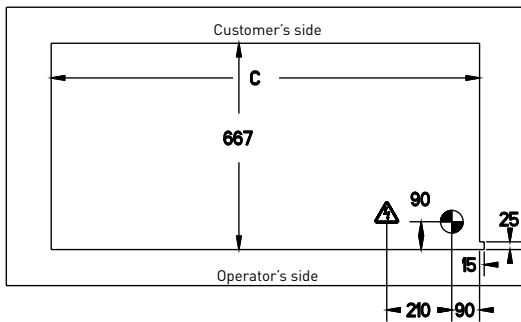
[1] Caution, the unit must be able to be installed remote from the well - [2] Option incompatible with the LED lighting under each shelf

[3] To be used between ambient temperatures of +26°C and +43°C and 60 % humidity max.

* plates Ø 150 mm / ramekins 130 x 90 mm / bottles Ø 65 mm

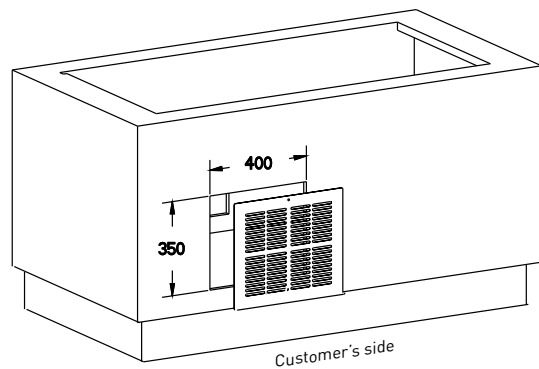
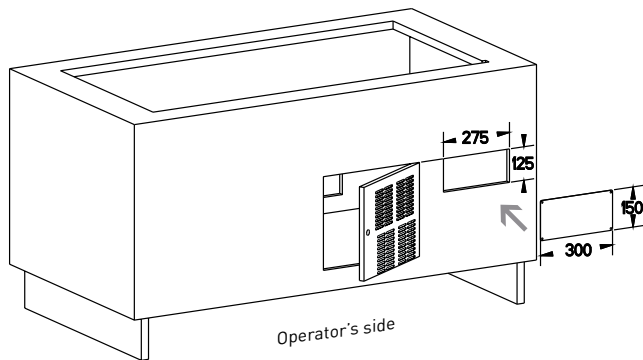
Note: for an element delivered without condensing unit, the release valves, the solenoid valve, the electric cabling unit and the electric thermostat are provided. Caution, depending on the cooling system, an evaporation pressure regulator may be required

Cooling power given in a 25°C ambient and a -15°C evaporation temperature



Drop-in dimensions	Condensing unit compartment	Tropicalized condensing unit compartment
2 GN 730x667 mm	400x600x320 mm	400x600x320 mm
3 GN 1060x667 mm	480x590x380 mm	480x590x380 mm
4 GN 1385x667 mm	480x590x380 mm	610x720x500 mm
5 GN 1710x667 mm	480x590x380 mm	610x720x500 mm

Depth of container	Overall depth of the well - P
100 mm	468 mm
150 mm	518 mm (1)
200 mm	568 mm (1)



Water outlet Ø 40 mm interior flush with the ground



Electrical inlet 1,5 m cable pending on the ground
M = single-phase wiring (1N 230V + PE)

An air vent is obligatory in the front of the unit on customer's side
A bigger aeration is necessary for the tropicalized condensing unit : mini. 565x500 mm

Caution, if you want to integrate our refrigerated displays in a niche, you need to let 100 mm space on the sides, the rear and the top of the display to avoid the condensation phenomenon

To get to the compressor easily and to guarantee the best performances, a door or a trapdoor with aeration is needed on operator's side.

(1) Condensing unit cannot be placed under the well

