



VAUCONSANT

LA DISTRIBUTION QUI
DONNE DE L'APPÉTIT

FOOD LINE

SYSTEM OF SUPPORTING WALLS WITH AMBIENT,
REFRIGERATED OR HEATED SHELVES



10/18
AISI 304

afnor
AC D40-004

- 20%
conso.
d'énergie

60 dBa
en moyenne


R-452A

MORE DESIGN

COMPLETELY RENEWED
THE CUSTOMER EXPERIENCE TO
CREATE MORE APPETITE

MORE CUSTOMIZABLE

WALL, SHELF, WELL,
ABOVE EVERYTHING IS
CUSTOMIZABLE

MORE ACCESSIBLE

WITHOUT TRAY SLIDE, FOOD LINE
BRINGING CUSTOMERS CLOSE TO
PREPARATIONS

Food Line is an entirely modular concept composed of walls that support refrigerated, heated or ambient shelves. Ultra-customizable, efficient, stylish and sophisticated, with Food Line, create appetite and animation to build customer loyalty !

SUPPORTING WALL

- 2 or 3 ambient, refrigerated or heated shelves

STANDARD EQUIPMENT

- Front panels in water-resistant laminate panels of 19 mm, 34 decors
- Top in 20 thick Pierredeplan®, 800 mm chassis height, 28 decors. Laminate front stripe on customer's side, 34 decors

Construction

- 18-10 AISI 304 stainless steel
- 4 built-in adjustable stainless steel feet

OPTIONS

- Single-phase 230 V plug + Earth - IP55 in stainless steel (protected and connected)
- Cladding of the supporting wall customized
- Top in granite, Corian, Hi-Macs, wood
- Tray deposit zone (600x130 mm)
- Decoration of the laminate front stripe of the top customized

AMBIENT, REFRIGERATED OR HEATED SHELVES

- 600x450 mm
- 35 verrines Ø 80 mm
- 16 cups Ø 120 mm
- 13 gratin dish 160x110 mm

CONSTRUCTION

- 18-10 AISI 304 stainless steel

STANDARD EQUIPMENT

- Frame with mirror polished finish
- Top in 6 mm thick tempered glass, color Lacobel T White Cool

OPTIONS

- Shelf frame in satin polish finish
- Shelf frame with epoxy paint
- Shelf top in glass with Lacobel T color chart

REFRIGERATED WELLS

- 1 GN 1/1 (530x325 mm), 30 mm deep
- 1 GN 1/1 (530x325 mm) for 100 mm deep containers

CONSTRUCTION

- 18-10 AISI 304 stainless steel with epoxy paint
- Refrigerated cooled contact well, sloped
- Refrigeration by cooled contact with copper placed underneath
- Insulated by CFC-free polyurethane foam

OPTIONS

- Well in stainless steel with satin polish finish

HEATED TOP - RECESSED HEATED TOP

Capacity

- 1 GN 1/1 (530x325 mm)
- 1 GN 1/1 (530x325 mm) for containers of 100 mm

CONSTRUCTION

- 18-10 AISI 304 stainless steel with epoxy paint
- Hot plate, dropped-in, in tempered glass with heating elements
- 30 mm rockwool insulation

OPTIONS

- Well in s/s with satin polish finish (recessed heated top)

TECHNICAL BOX

- Touchscreen for central control
 - Front panels in water-resistant laminate panels of 19 mm, 34 decors
 - Built-in adjustable stainless steel feet
- Technical box for refrigerated unit
- Remote controlled electronic thermostat with digital display
 - Laminate ventilation grid
 - Condensing unit on Quick-out slides
 - Evaporation drip tray
- Technical box for heated unit
- Temperature control with thermostat and control indicator
 - Full internal fuse protection

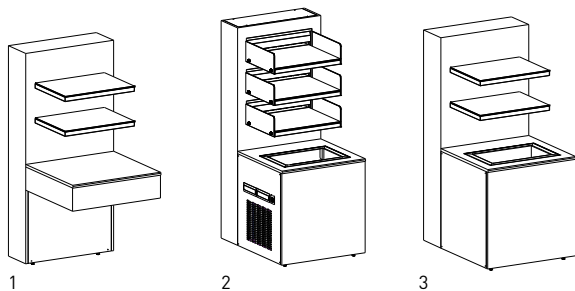
CONSTRUCTION

- 18-10 AISI 304 stainless steel

OPTIONS

- Remote for central control
- Full-out condensing unit on slides
- Tropicalized condensing unit
- Delivered without condensing unit (remote condensing unit)





1. AMBIENT SUPPORTING WALL

Capacity		2 shelves	3 shelves	Customized
Height		1681 mm	1810 mm mm
Length		760 mm	760 mm	760 mm
Width		260 mm	260 mm	260 mm
Weight		66 Kg	76 Kg	
Supp. wall with ambient shelves	Code	777001	777002	777003

2. REFRIGERATED SUPPORTING WALL - MEDIUM TERM SERVICE - 4h

Capacity		2 shelves	3 shelves	Customized
Height		1681 mm	1810 mm mm
Length		760 mm	760 mm	760 mm
Width		260 mm	260 mm	260 mm
Weight		150 Kg	180 Kg	
Refrig. C. ⁽¹⁾		570 W	630 W	
Elect. P.		760 W	760 W	
Wall with refrigerated shelves and GN 1/1 well, 30 mm deep	Code	777004	777005	777006
Wall with refrigerated shelves and GN 1/1 well for 100 mm containers	Code	777007	777008	
Options				
Full-out condensing unit on slides (complete extraction)	Code	711008	711008	
With tropicalized condensing unit ⁽²⁾	Code	711009	711009	
Delivered without condensing unit (remote condensing unit)	Code	711010	711010	

3. HEATED SUPPORTING WALL

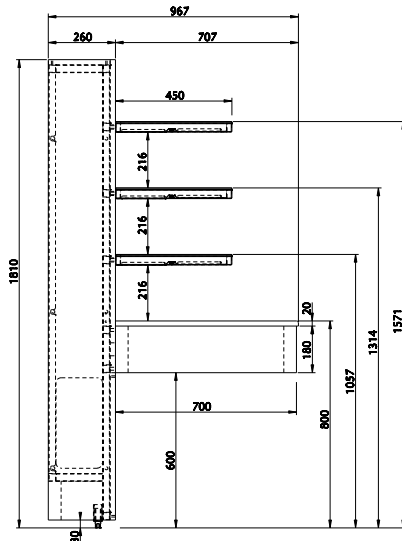
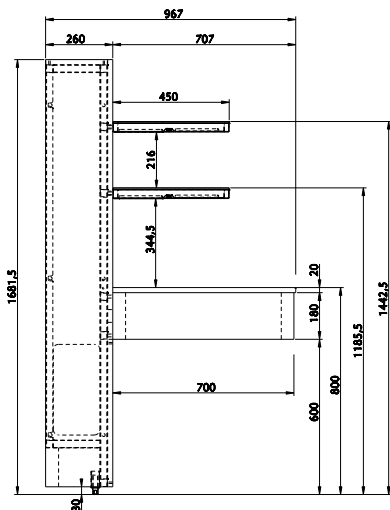
Capacity		2 shelves	3 shelves	Sur mesure
Height		1681 mm	1810 mm mm
Length		760 mm	760 mm	760 mm
Width		260 mm	260 mm	260 mm
Weight		80 Kg	100 Kg	
Elect. P.		1000 W	1400 W	
Supp. wall with heated shelves and GN 1/1 heated top	Code	777009	777010	777011
Supp. wall with heated shelves & GN 1/1 recessed heated top, for 100mm deep containers	Code	777012	777013	

COMMON OPTIONS

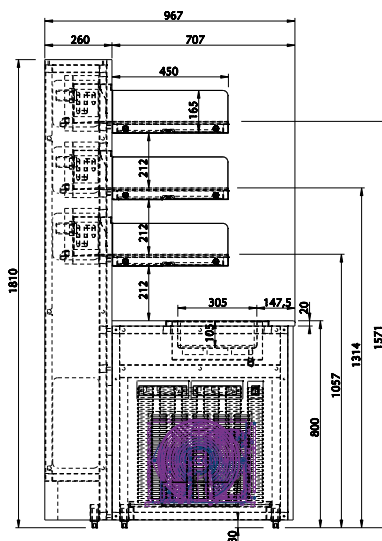
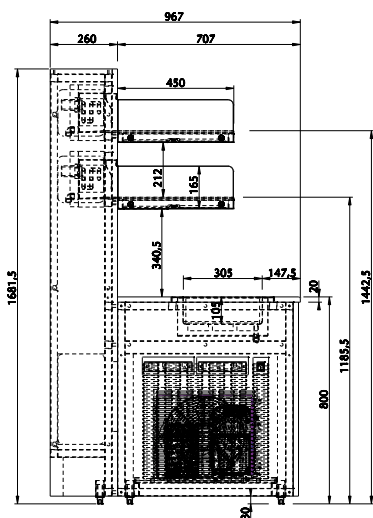
Description	Code
Single-phase 230 V plug + Earth - IP55 in s/s (connected and connected)	622009
Shelf frame with epoxy paint - per shelf	611018
Top of glass shelf with Lacobel T color chart - the shelf	644006
Top of working surface in granite, Corian, Hi-Macs, wood	655010
Decoration of the laminate front stripe customized - per LM	655011
Tray deposit zone(600x130 mm) - per unit	655017

(1) Refrig. C. given for an evaporation temperature of -15°C

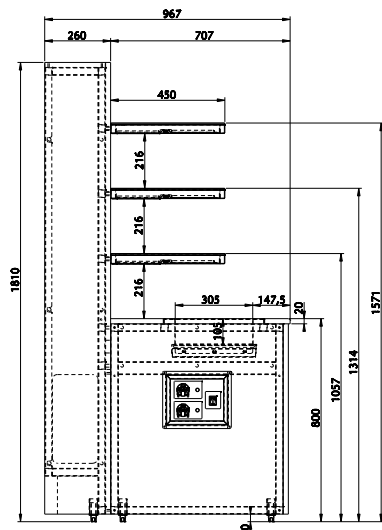
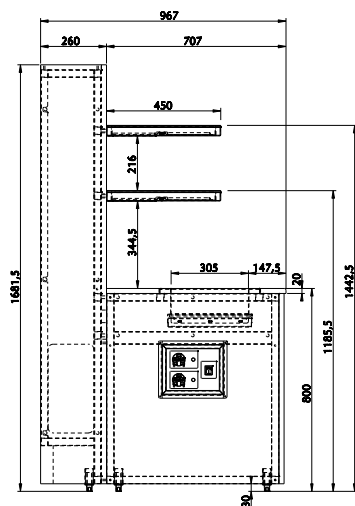
(2) Use between +26°C and 43°C ambient temperature, and 60% humidity max



AMBIENT SUPPORTING WALL



REFRIGERATED SUPPORTING WALL



HEATED SUPPORTING WALL

Note: for a unit delivered without condensing unit, the expansion valve, the solenoid valve, the electrical box, and small size controller to drop-in with the electronic thermostat are supplied.